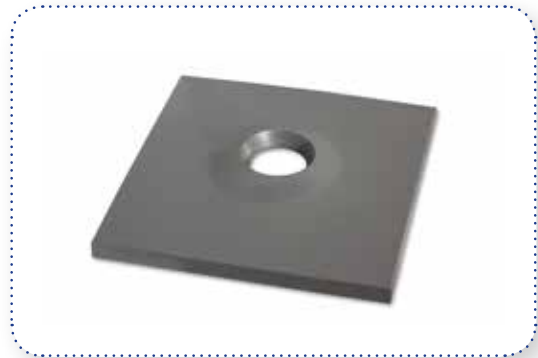
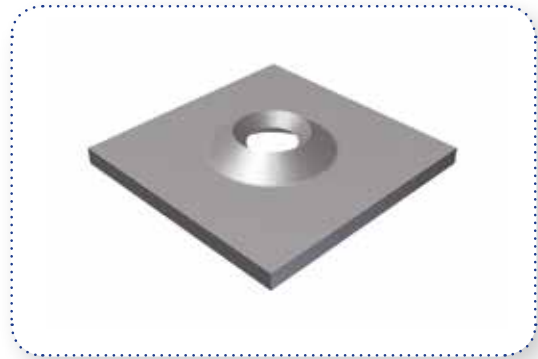


## PLATES &amp; W-STRAP

**GROUND SUPPORT VOLCANO PLATES****Features**

- Dome profile allows for 18° angles of alignment when installing the rock bolt with a domed ball washer
- Can be supplied with a “hanger” slot
- Available as “rumbled” to take off edges
- Available as galvanised
- Available with welded tabs for cable sling retainment



Square Dimension (mm)	Thickness (mm)	Hole Diameter (mm)	Approx. Collapse Load * (t)	Unit Weight (kg)	Standard Packaging
100 x 100	8	36	20	0.628	10/bundle 2000/pallet
150 x 150	6	36	12	1.060	5/bundle 980/pallet
	10	36	24	1.760	
200 x 200	6	36	12	1.800	5/bundle 500/pallet
150 x 150	10	50	24	1.740	5/bundle 980/pallet

\*Collapse load is measured using a plate compression test with a nut and dome ball  
100x100mm plates are tested over a 50mm hole span, Larger plates are tested over a 80mm hole span