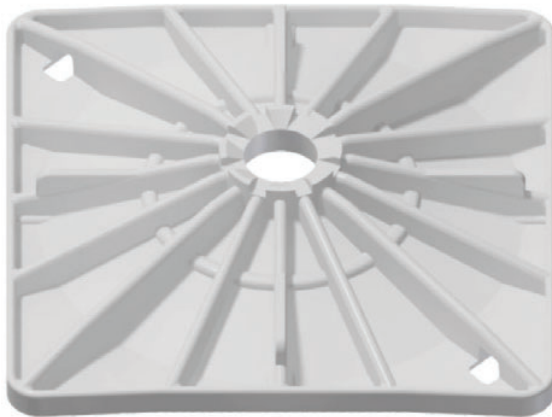


Plates

Plastic Plates: 22 - 25mm Dowels



Features:

- Used as coal rib surface support where extraction involved cutting the support
- Compatible with Jenmar 22mm dowels
- Flexibility of all plastic allow conforming to shape of uneven coal rib
- Tested to ensure no splitting under severe deformation found in uneven coal ribs
- Square plate is designed to visually turn corners upon applying hydraulic rib bolter thrust
- Do not store these in direct sunlight

Dimension (mm)	Hole diameter (mm)	Minimum Pull through load (kN)	Mass (kg)	Standard pack	Compatible Bolt dia (mm)
230 round	33	20	0.3	1000	22 and 25
230 square	33	12	0.3	1000	22 and 25