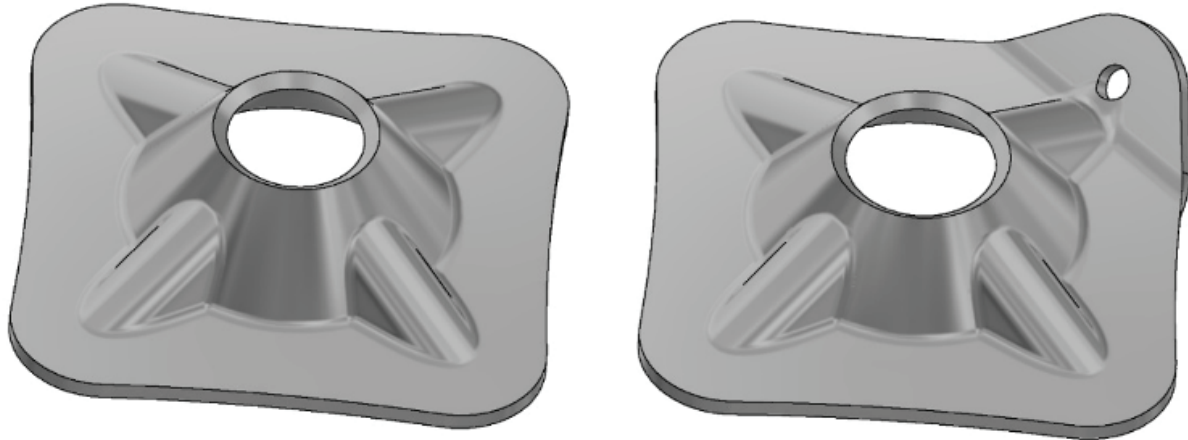


Plates

Kanga Plate to suit Threaded and Temporary Rock Bolts



Features:

- High load bearing characteristics
- Dome profile allows for 18° angles of alignment when installing the rock bolt with a domed ball washer or dome nut
- Light weight and rounded corners
- Lesser tendency to cut mesh upon loading
- Load rated hanger available to 50kg
- Available in black or galvanised
- Varying combination plate applications available

| Square dimension (mm) | Thickness (mm) | Hole diameter (mm) | Minimum Collapse load (kN) | Minimum Pull Through load (kN) | Mass (kg) | Standard pack | Steel Grade |
|-----------------------|----------------|--------------------|----------------------------|--------------------------------|-----------|---------------|-------------|
| 150 x 150 | 5 | 38 | 201 | 201 | 0.85 | 980/pallet | 400 |
| 150 x 150 | 5 | 41 | 201 | 201 | 0.85 | 980/pallet | 400 |
| 150 x 150 | 6 | 38 | 245 | 245 | 1.02 | 980/pallet | 400 |

Available with hanger slots
 Available Black or Hot Dipped Galvanised
 Conformance Certificates provided for all Civil products