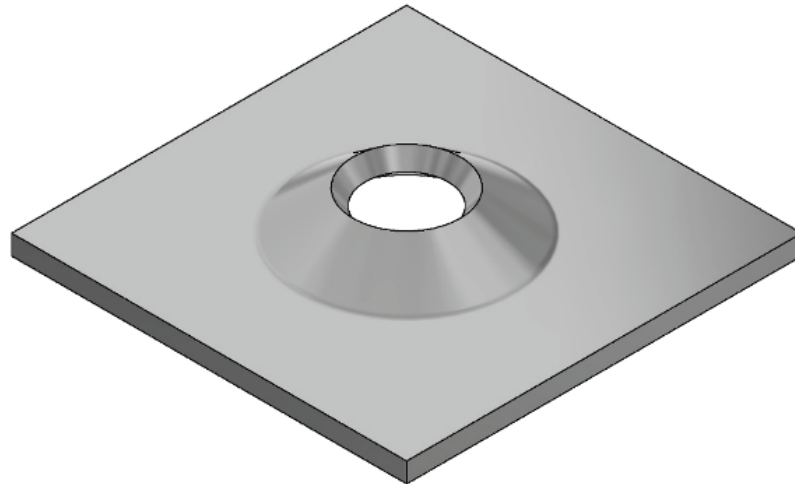


Plates

Volcano Plate to suit 25mm Threaded Bolts



Features:

- High load bearing characteristics
- Dome profile allows for 18° angles of alignment when installing the rock bolt with a domed ball washer or dome nut
- Available in black or galvanized
- Available in a wide range of thicknesses and dimensions

Dimension (mm)	Thickness (mm)	Hole diameter (mm)	Minimum Collapse Load (kN)	Minimum Pull through load (kN)	Mass (kg)	Standard pack	Steel grade
300 x 200	10	42	216	294	1.73	980	250

Material is in accordance with AS/NZS 1594 - HA250.
 Available Black or Hot Dipped Galvanised
 Conformance Certificates provided for all Civil products