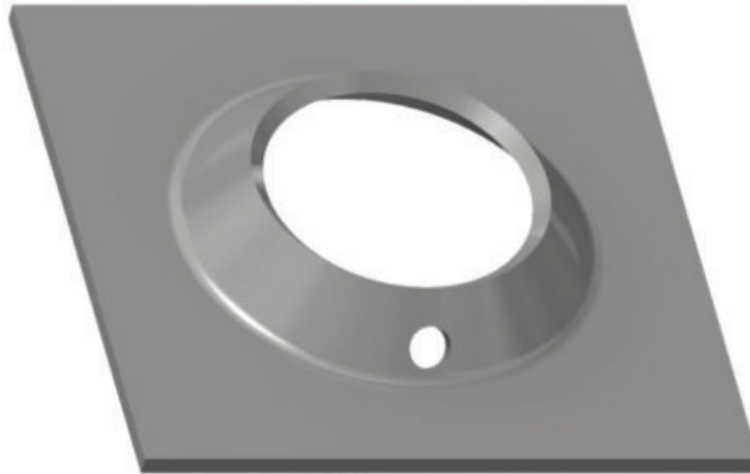


Plates

316 SS Volcano Plate to suit Low Profile Bolt and the 18mm DCP Cable Bolt Both with 316 SS Grout Bell



Features:

- High load bearing characteristics
- Dome profile allows for 15° angles of alignment when installing the Low Profile rock bolt or the 18mm DCP Cable Bolt fitted with a 316 Stainless Steel grout bell
- Plate supplied in 316 Stainless Steel
- Supplied with a 10mm grout indicator hole

Dimension (mm)	Thickness (mm)	Hole diameter (mm)	Minimum Collapse Load (kN)	Minimum Pull through load (kN)	Mass (kg)	Standard pack	Steel grade
150X150	5	64	216	275	0.862	1000	316

Material is in accordance with AS1449:1994 or equivalent
Conformance Certificates provided for all Civil Products