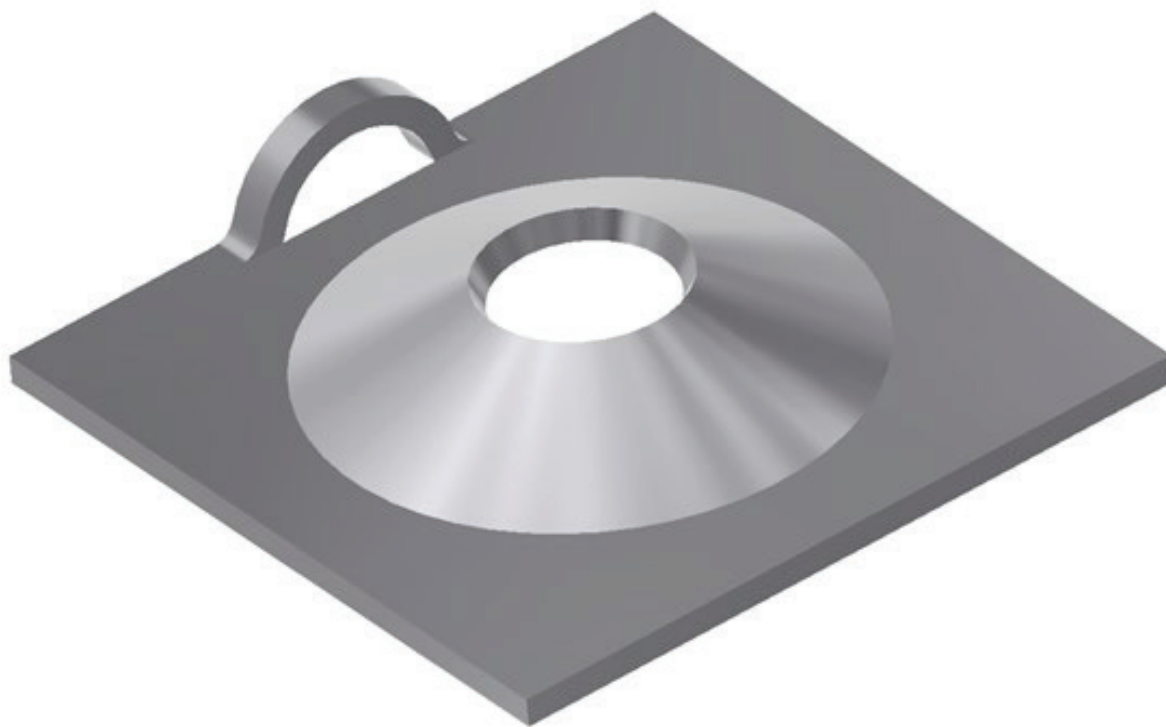


Plates

Volcano Plate



Features:

- Can be supplied with a "hanger" slot
- Available as "rumbled" to take off sharp edges
- Available with welded tabs for cable sling retainment
- Optional 50kg WLL hanger slot

Square dimension (mm)	Thickness (mm)	Hole diameter (mm)	Minimum Collapse load (kN)	Minimum Pull Through load (kN)	Mass (kg)	Standard pack	Steel Grade
150 x 150	6	36	74	98	1.06	980	HA3PO

Material is in accordance with AS/NZS 1594 - HA250.

Available plain or hot dipped galvanised

Conformance Certificates provided for all Civil products