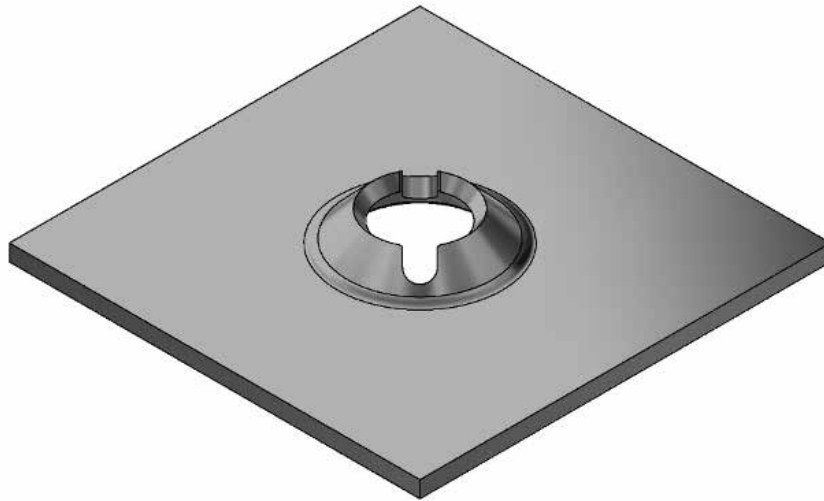


## Groutable Cable Volcano Plate 63T Sumo Cables



### Features:

- Dome profile allows for 18° angles of alignment when installing the cable bolt with a domed barrel
- Grout indicator slots
- Available as “rumbled” to take off sharp edges

Dimension (mm)	Thickness (mm)	Hole diameter (mm)	Minimum Pull through load (kN)	Mass (kg)	Standard pack	Steel grade
300x300	12	56	441	8.5	100	450

Material is in accordance with AS/NZS 3678.  
 Available plain or hot dipped galvanised  
 Conformance Certificates provided for all Civil products