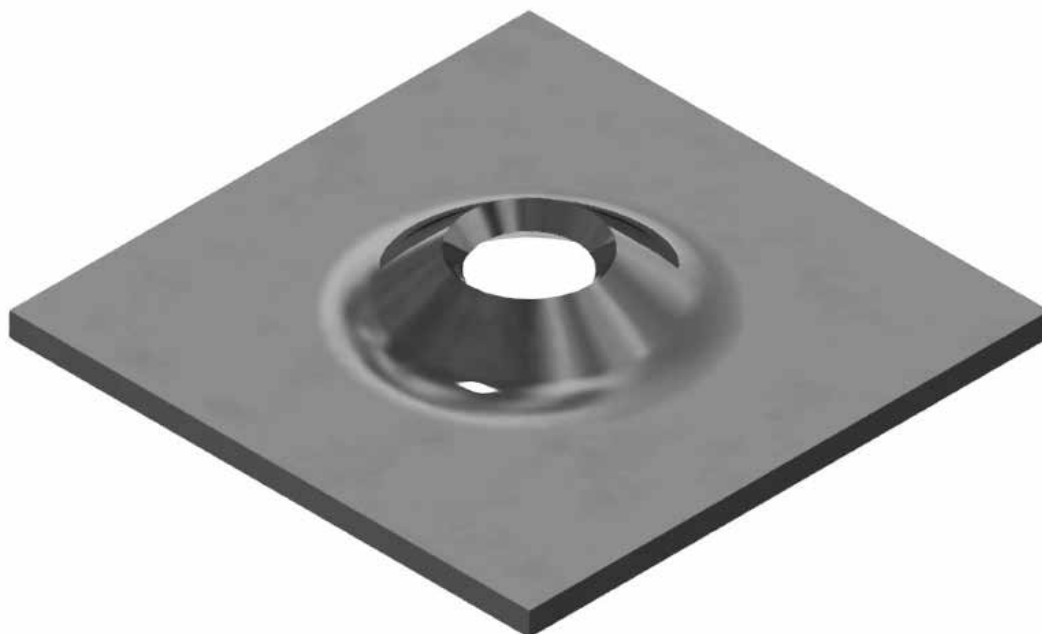


Volcano Plate to suit Goliath Cable and R51 SDHB



Features:

- Dome profile allows for 18° angles of alignment when installing the cable bolt with a domed barrel
- Grout indicator slots available on request
- Available in a range of thicknesses and dimensions to suit design and capacity requirements
- Available as “rumbled” to take off sharp edges

| Dimension (mm) | Thickness (mm) | Hole diameter (mm) | Minimum Pull through load (kN) | Mass (kg) | Standard pack | Steel grade |
|----------------|----------------|--------------------|--------------------------------|-----------|---------------|-------------|
| 300x300 | 14 | 54 | 785 | 9.7 | 100 | 450 |

Available in Black or Hot Dipped Galvanised
Conformance Certificates provided for all Civil products