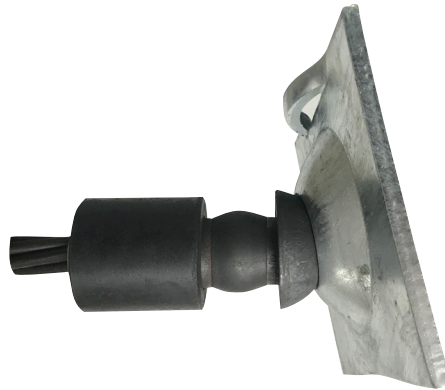


Yield Tube



The patented Yield Tube provides proven dynamic and quazi-static capacity when used with cable and rockbolts. High and consistent collapse loads and easy installation, make the Yield Tube a great “simple go to” solution.

Features:

- Yield Tube available for 15.2mm, 17.8mm and 21.8mm cables and JENNMAR cable bolts
- Dynamic tested with cables, confirmed to increase dynamic capacity by 10kJ
- Supplied separately and easily installed, without changing current installation processes
- Allows improved application in squeezing ground
- Anti-corrosion coating available on request