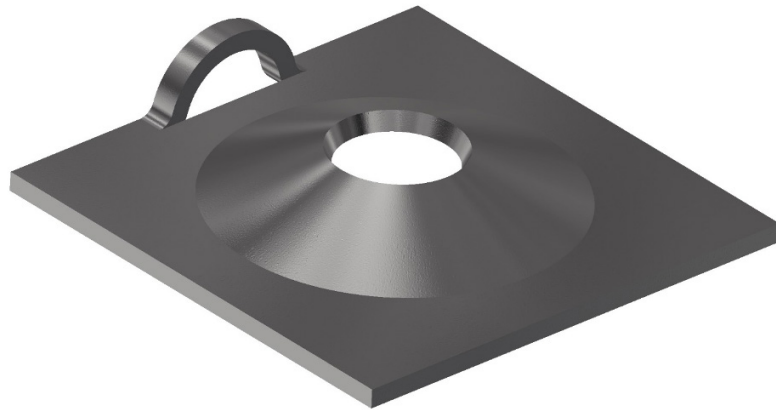


# Plates

## Rock Bolt Volcano Plate



### Features:

- Dome profile allows for 18° angles of alignment when installing the rock bolt with a domed ball washer
- Can be supplied with a “hanger” slot
- Available as “rumbled” to take off sharp edges
- Available with welded tabs for cable sling retainment
- Optional 50kg WLL hanger slot

Square dimension (mm)	Thickness (mm)	Hole diameter (mm)	Minimum Collapse load (kN)	Mass (kg)	Standard pack
150 x 150	6	36	120	1.1	980