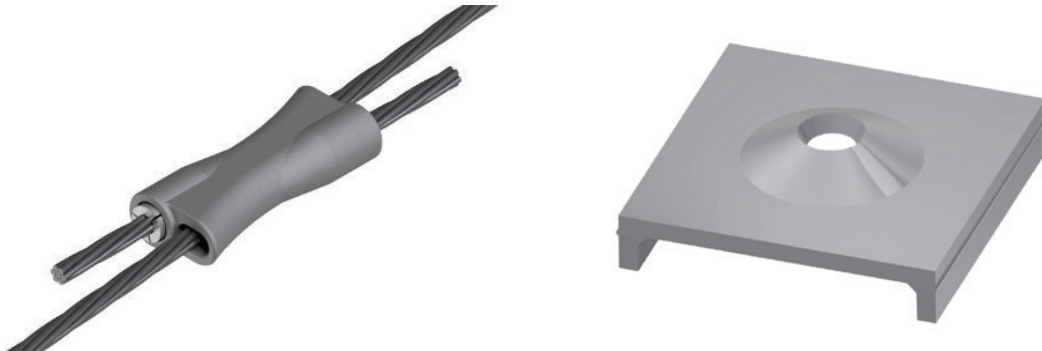


## Cable Bolts Accessories

### 15.2mm Cable Truss With Splice Tube



#### Features:

- Designed for ease of use joining truss tails
- All barrels & wedges to be pretensioned to a minimum 8 tonnes to ensure the wedge teeth penetrate the strand to achieve maximum load capacity
- Suit 15.2mm or 18mm Twin and Triple Strand Trusses
- Curvature of the outlet minimizes stress concentration of the cable at the bend
- Less wastage compared to traditional tension blocks

Length (mm)	Width (mm)	Unit Weight (kg)	Qty/Bucket
200	95	3.8	5