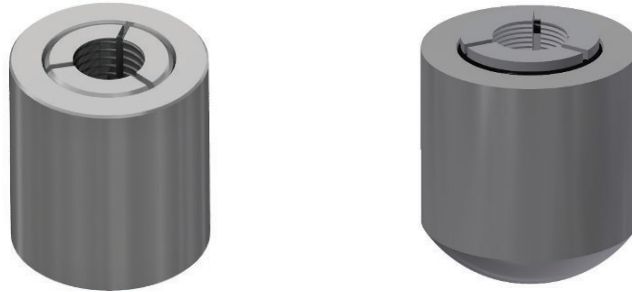


Cable Bolts Accessories

Cable Bolt Barrel & Wedges



Features:

- Designed for Jennmar 15.2mm to 31mm cable range including twin, triple strand tendons and trusses,
- Flat barrels & wedges are used with flat plates
- Dome barrels & wedges are used with volcano plates
- All barrels & wedges to be pretensioned to a minimum 8 tonnes to ensure the wedge teeth penetrate the strand to achieve maximum load capacity
- All barrels & wedges have an oil film coating and are pre-packaged in strong 4 litre buckets for corrosion protection
- Other corrosion protection options available

Type	Cable Diameter (mm)	Length (mm)	Diameter (mm)	Qty/Bucket
Flat	15.2	44	42	20
Domed	15.2	44	42	20
Flat	17.8	57	50	10
Domed	22	60	58	10
Domed	31	74	70	5