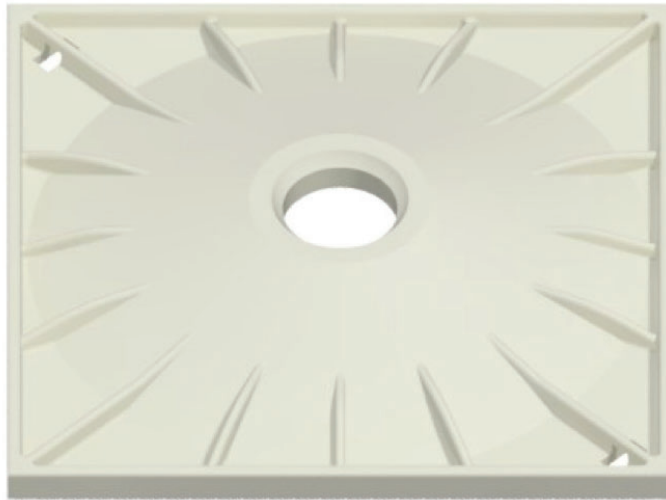


## Cuttable Support

### Plastic Steel Combination Plates: 32mm Dowels



#### Features:

- Used as coal rib surface support where extraction involved cutting the support
- Thin 3mm steel plate encased within the main plate provides up to 3 times the strength of a standard plastic plate
- Superior strength is compatible with new improved fiberglass dowels
- Steel inserts allow use of bolting rig magnetic holders
- Steel plate thin gauge and rounded corners minimize risk of conveyor belt damage
- Do not store these products in direct sunlight

Dimension (mm)	Hole diameter (mm)	Minimum Pull through load (kN)	Mass (kg)	Standard pack	Compatible Bolt diameter (mm)
200 x 200 square	51	90	0.7	1000	32
300 x 300 square	51	90	1	1000	32