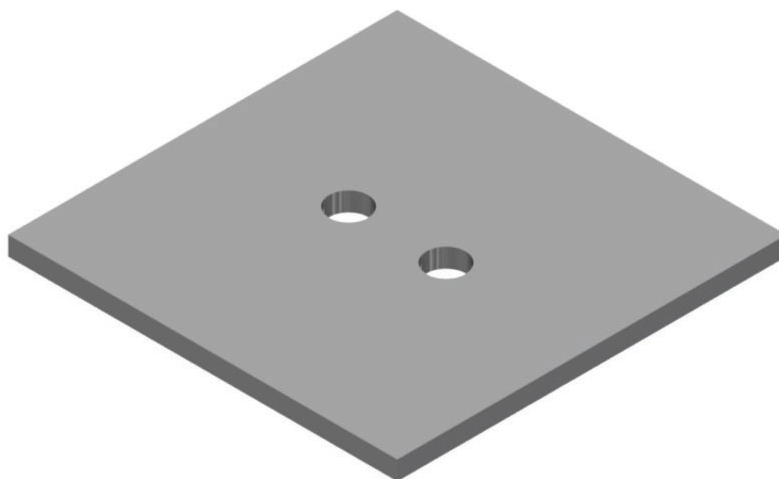


Plates

Flat Plate



Features:

- Can be supplied “rumbled” to take off edges. Unless specified, plates are supplied un-rumbled
- Used predominately with 15.2mm cable bolts can be supplied with 2 holes for cable bolting and grout tube application
- 200 x 200mm plates are often used on single tail twin-strand cable bolts with a flat barrel and wedge. Can be used in conjunction with a pizza pan
- Available as black or hot dipped galvanised
- Other plate thickness of 12, 14mm also available

Dimension (mm)	Thickness (mm)	Hole diameter (mm)	Mass (kg)	Standard pack
200 x 200	10	20	3.2	250