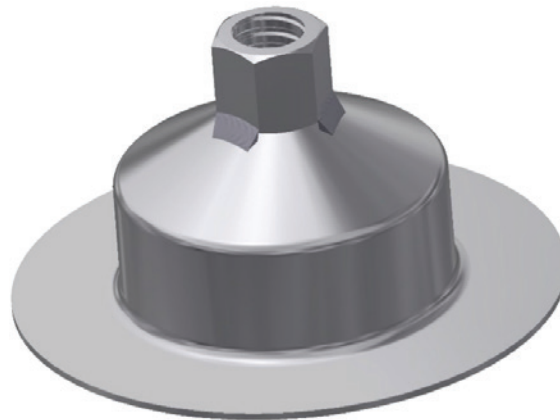


Plates

Mesh Plate



Features:

- For pinning mesh against the rock face over top of pre-installed rock bolts
- Welded nut of any size to thread onto existing installed rock bolts
- 200mm round plate to aid spinning the plate against mesh, no corners to catch in the wires
- Extruded height to accommodate the standard tail length of an installed bolt, allowing the mesh to be pushed tight against the rock face
- 3mm thick plate for extra strength
- Good for pinning rock fall netting over installed dynamic ground support

Nut	Diameter (mm)
20mm J-Tech	200
25mm J-Tech	200