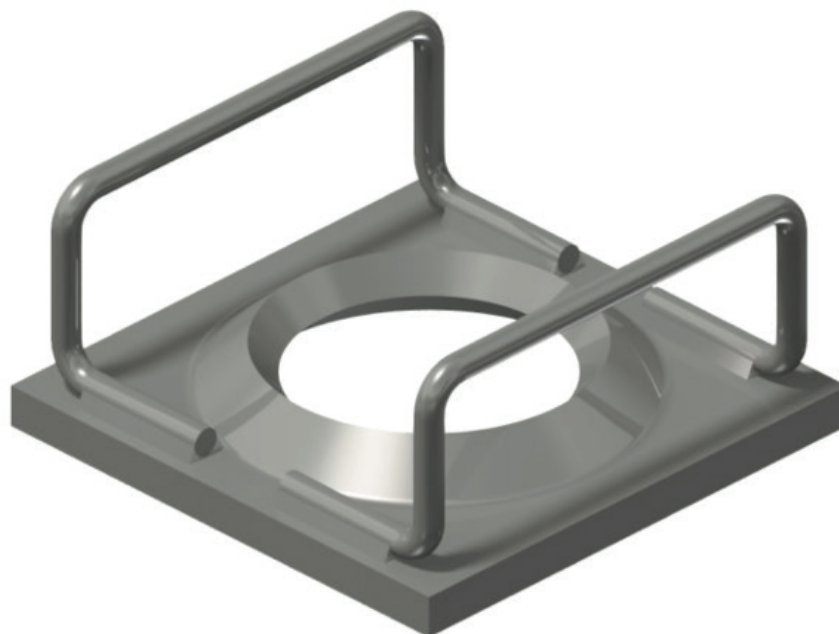


Plates

316 SS Volcano Handle Bar Plate to Suit 22mm DCP Cable Bolt with 316 SS Grout Bell



Features:

- High load bearing characteristics
- Dome profile allows for 15° angles of alignment when installing the 22mm DCP Cable Bolt fitted with a 316 Stainless Steel grout bell
- Plate and handle bars Supplied in 316 Stainless Steel
- Supplied with a 10mm grout indicator hole

Dimension (mm)	Thickness (mm)	Hole diameter (mm)	Minimum Collapse Load (kN)	Minimum Pull through load (kN)	Mass (kg)	Standard pack	Steel grade
150X150	12	76	540	638	2.05	420	316

Material is in accordance with AS1449:1994 or equivalent
 8mm 316 SS Handle bars welded in accordance to AS1554
 Conformance Certificates provided for all Civil Products