

## Temporary Rock Bolt Accessories

### Expansion Shell M24 To Suit 45mm Hole RH



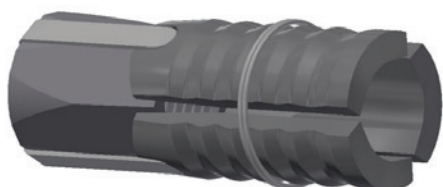
#### Features:

- Able to achieve tension to 50kN in competent ground
- Parallel contact of the expansion shell leaves in bore hole allows for excellent load transfer. Load testing should always be performed to determine the suitability of the anchor.
- Over drilling of the hole depth by a minimum 50mm ensures the expansion shell is correctly engaged with the bore hole

| Thread type (mm) | Length (mm) | Mass (kg) | Hole Size (mm) | Minimum Pre Tension (kN) |
|------------------|-------------|-----------|----------------|--------------------------|
| M24 RH           | 115         | 0.6       | 45             | 50                       |

Available Black or Hot Dipped Galvanised AS/NZS 4680:2006

### Expansion Shell M24 To Suit 45mm Hole LH



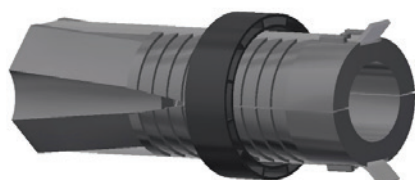
#### Features:

- Able to achieve tension to 50kN in competent ground
- Parallel contact of the expansion shell leaves in bore hole allows for excellent load transfer. Load testing should always be performed to determine the suitability of the anchor.
- Over drilling of the hole depth by a minimum 50mm ensures the expansion shell is correctly engaged with the bore hole

| Thread type (mm) | Length (mm) | Mass (kg) | Hole Size (mm) | Minimum Pre Tension (kN) |
|------------------|-------------|-----------|----------------|--------------------------|
| M24 LH           | 115         | 0.6       | 45             | 50                       |

Available Black or Hot Dipped Galvanised AS/NZS 4680:2006

### Expansion Shell M24 To Suit 51mm Hole LH



#### Features:

- Able to achieve tension to 50kN in competent ground
- Parallel contact of the expansion shell leaves in bore hole allows for excellent load transfer. Load testing should always be performed to determine the suitability of the anchor.
- Over drilling of the hole depth by a minimum 50mm ensures the expansion shell is correctly engaged with the bore hole

| Thread type (mm) | Length (mm) | Mass (kg) | Hole Size (mm) | Minimum Pre Tension (kN) |
|------------------|-------------|-----------|----------------|--------------------------|
| M24 LH           | 135         | 0.75      | 51             | 50                       |

Available Black or Hot Dipped Galvanised AS/NZS 4680:2006