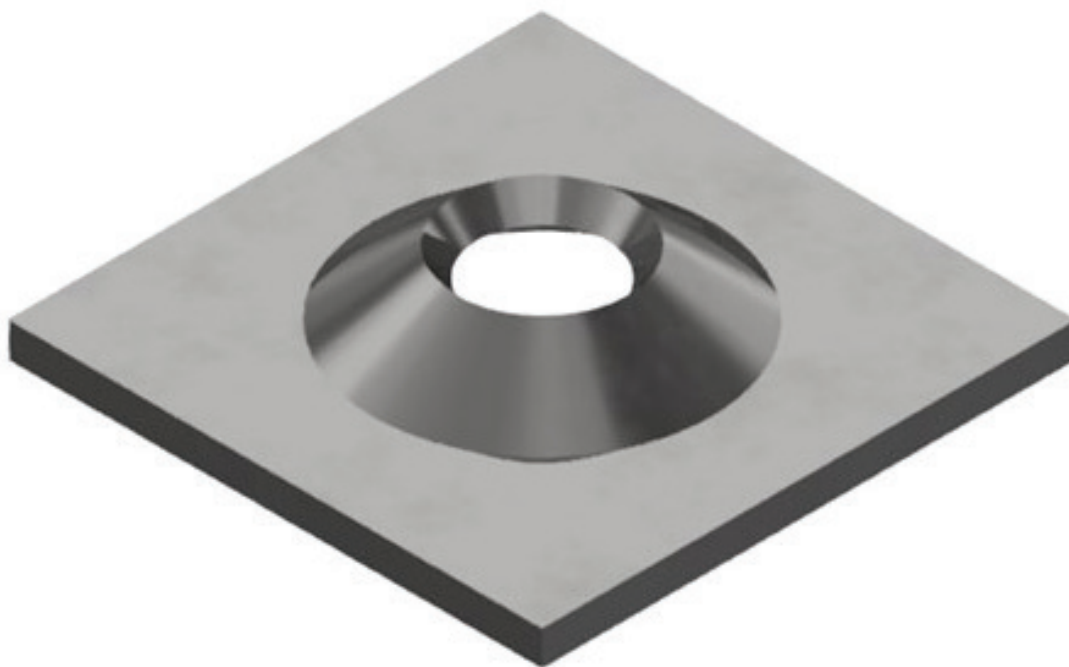


## Volcano plate suit M24 High Tensile bolts



### Features:

- Dome profile allows for 18° angles of alignment when installing the rock bolt with a domed ball washer or domed nut
- “Rumbled” to take off sharp edges
- Available as plain or with hot dip galvanised corrosion protection

Square dimension (mm)	Thickness (mm)	Hole diameter (mm)	Minimum Collapse load (kN)	Minimum Pull Through load (kN)	Mass (kg)	Standard pack	Steel Grade
150 x 150	10	36	216	295	1.76	250/pallet	250

Material is in accordance with AS/NZS 1594 - HA250.

Available plain or hot dipped galvanised

Conformance Certificates provided for all Civil products